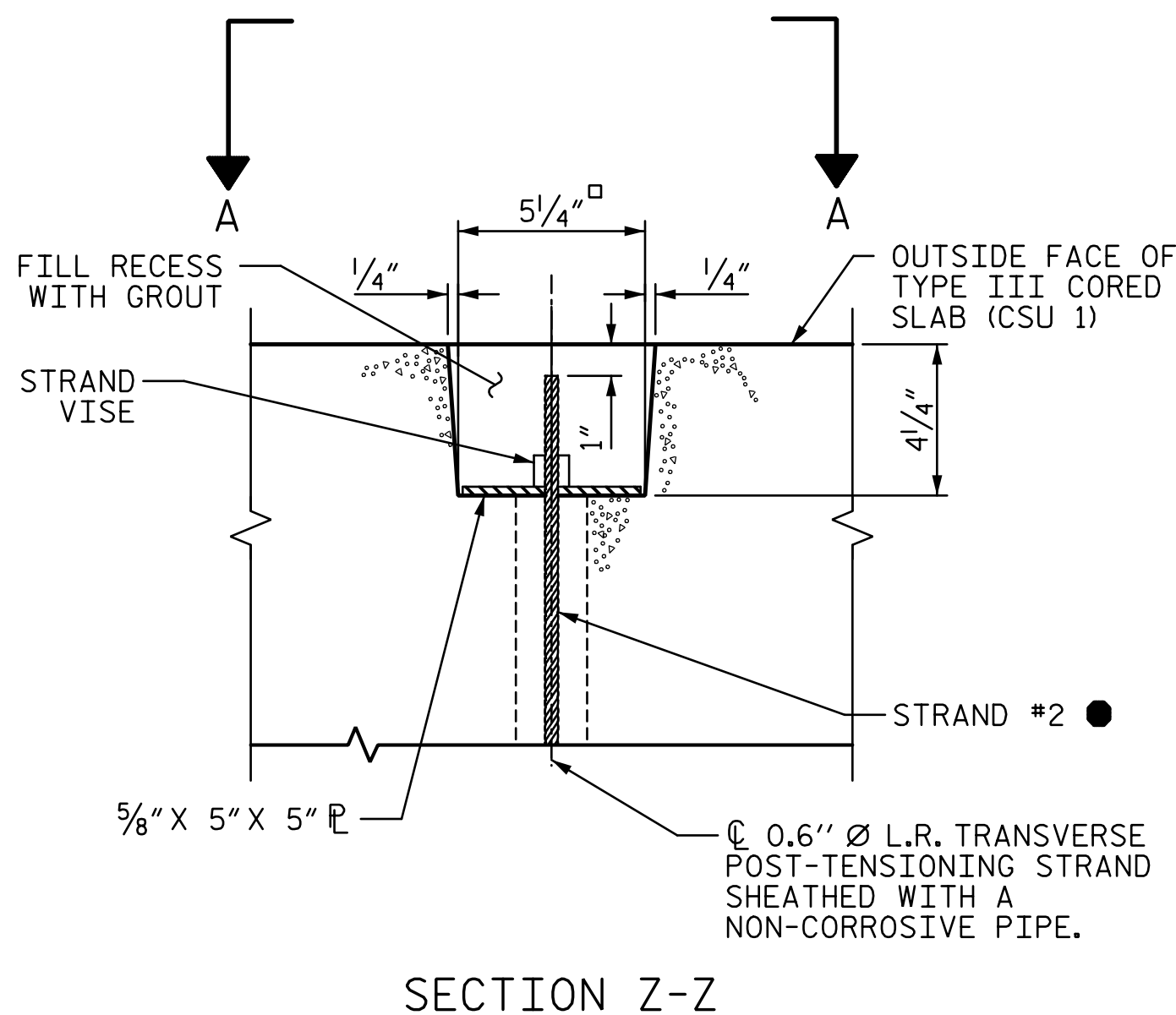
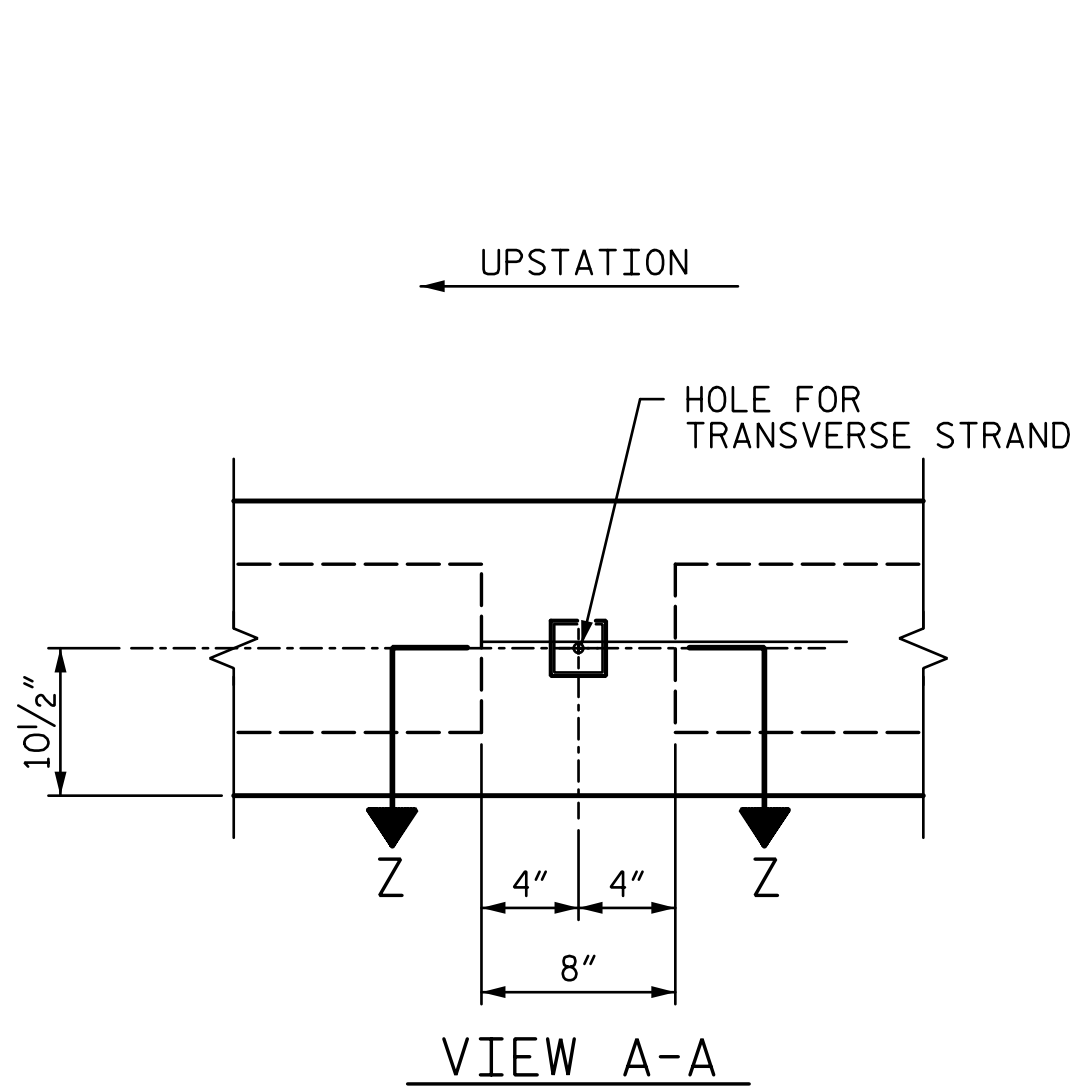
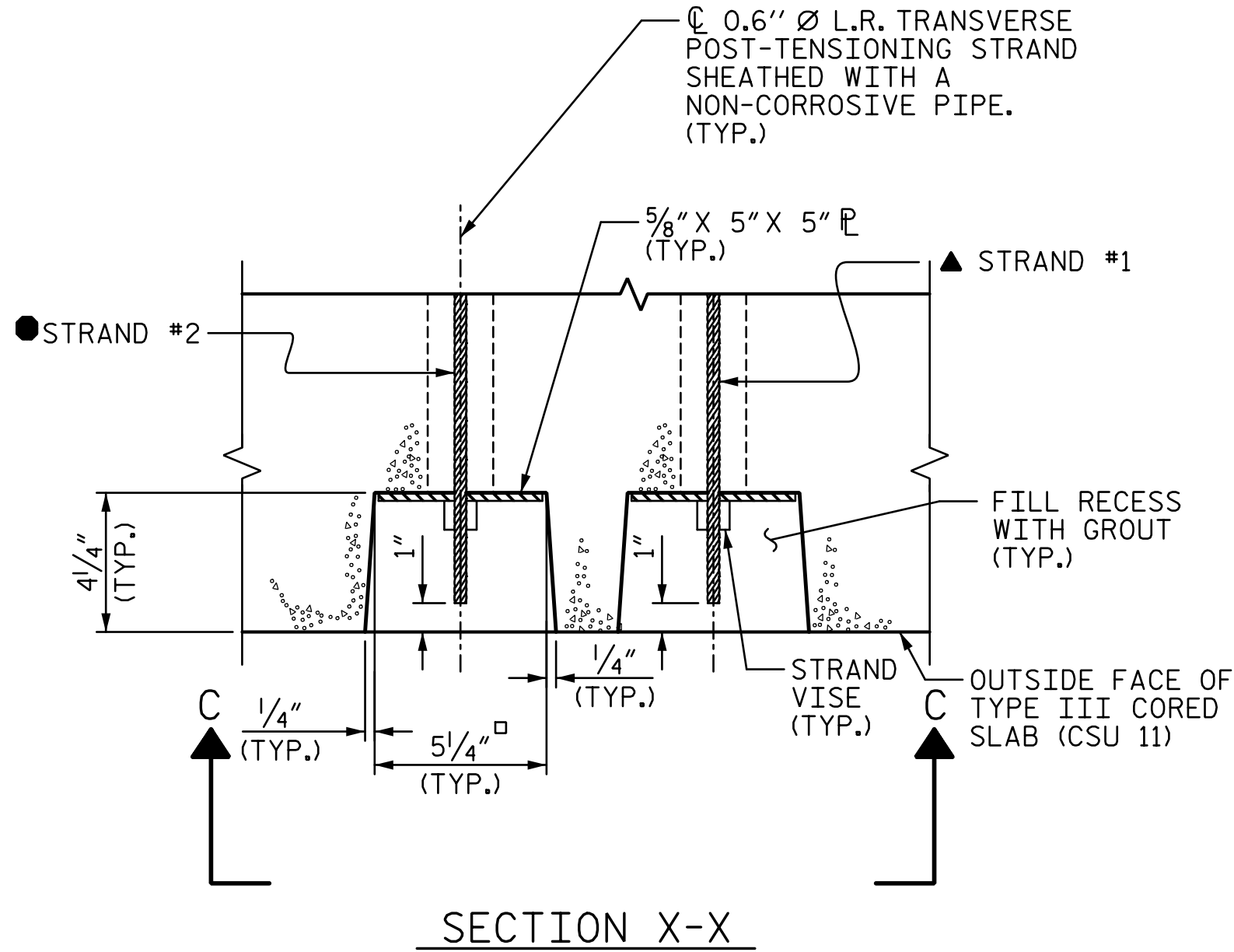
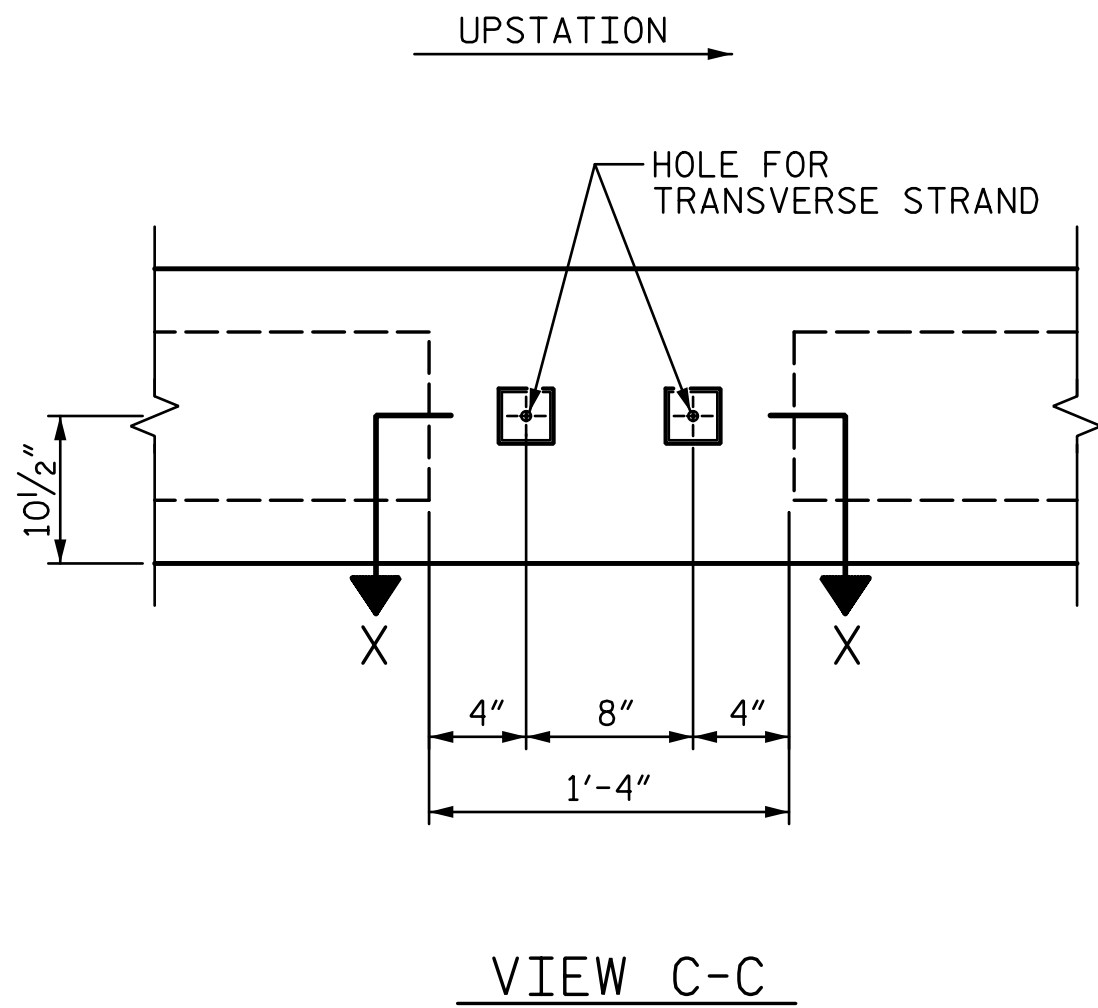


DETAIL B
(TYPE II UNIT)
(DOWNSTATION SET OF STRANDS
AND DIAPHRAGM SHOWN,
UPSTATION SET OF STRANDS
AND DIAPHRAGM SIMILAR)



DETAIL D
(TYPE III UNIT - CSU 1)



DETAIL C
(TYPE IV UNIT-CSU 11)

GROUTED RECESS AT END OF POST-TENSIONED STRAND OF CORED SLABS

- ▲ STRAND #1 GOES THRU CORED SLAB UNITS 7 THRU 11 (TO BE TENSIONED DURING STAGE 3 CONSTRUCTION)
- STRAND #2 GOES THRU ALL 11 CORED SLAB UNITS (TO BE TENSIONED DURING STAGE 5 CONSTRUCTION)

DRAWN BY : J. SCACCA DATE : 01/2025
CHECKED BY : M. ACOSTA DATE : 01/2025
DESIGN ENGINEER OF RECORD: M. ACOSTA DATE : 03/2026

3/11/2026
\\rsandh.com\\files\\Projects\\NCDOT\\10034734005_Henderson_55\\03.00 Project Execution\\03.04 Design\\Structures\\CAD\\401.033-DF18314.2045332-SMU-CS4-S-17-440055.dgn
AcostaM

DOCUMENT NOT CONSIDERED
FINAL UNLESS ALL
SIGNATURES COMPLETED

RS&H
RS&H Architects-Engineers-Planners, Inc.
8521 Six Forks Road, Suite 400
Raleigh, NC 27615
919-926-4100 FAX 919-846-9080
www.rsandh.com
North Carolina License Nos. 50073-F-0493-C-20

STATE OF NORTH CAROLINA
DEPARTMENT OF TRANSPORTATION
RALEIGH

3'-0" X 1'-9"
PRESTRESSED CONCRETE
CORED SLAB UNIT

REVISIONS						SHEET NO.
NO.	BY:	DATE:	NO.	BY:	DATE:	
1			3			S-17
2			4			TOTAL SHEETS 32